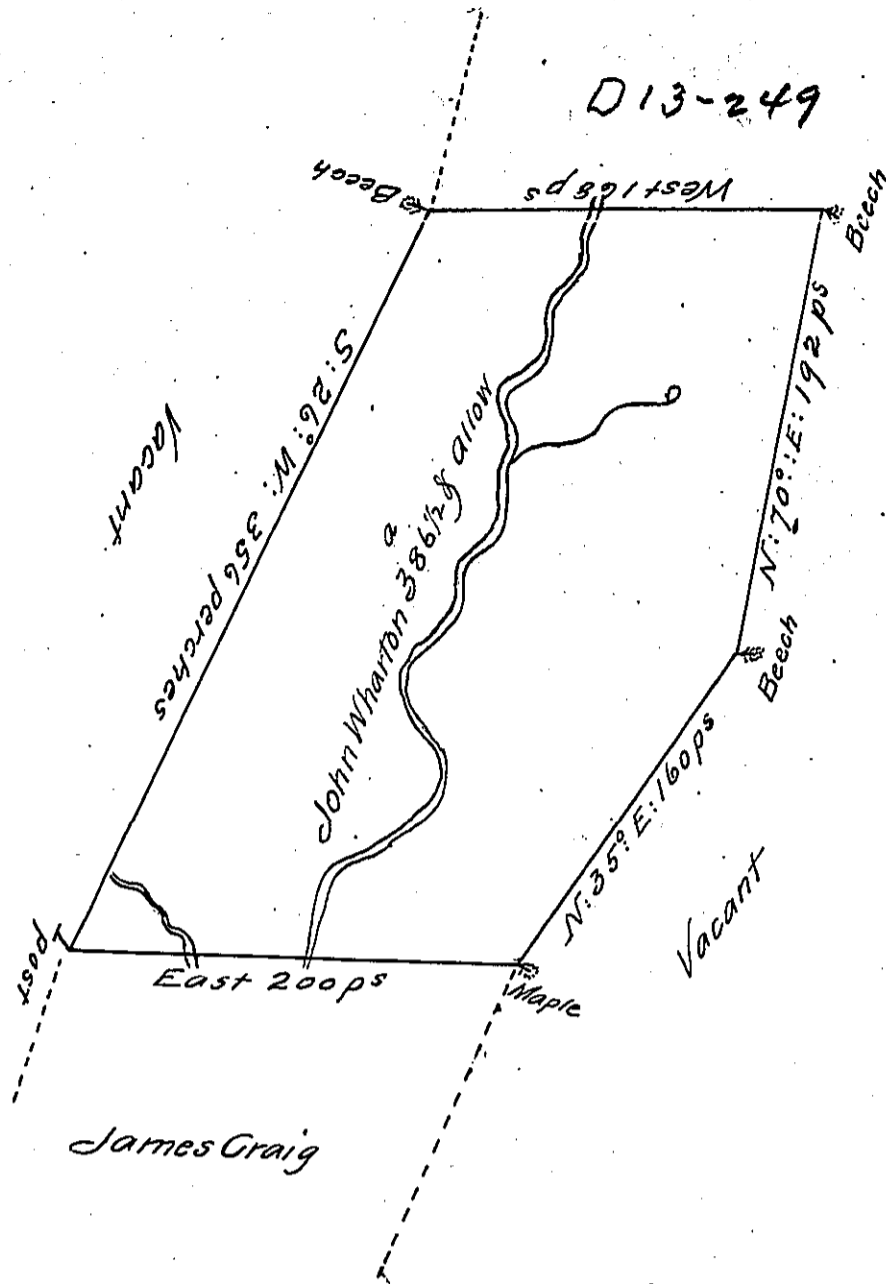


D13-249



A Draught of a Tract of Land Called _____ Situate on Mashapping about Sixteen Miles from the Mouth thereof including a Meadow and an Indian Cabin in the County of Northumberland Containing three hundred and eighty six Acres and a half Acre besides the usual allowance of 6 p Cent for Roads 8th Surveyed the 26th day of September 1774 for John Wharton In pursuance of a Warrant Dated the 15th day of June 1774.

by Cha^s Stewart Dy Sur^r

To John Lukens Esq^r Survey^r Gen^l

IN TESTIMONY that the above is a copy of the original remaining on file in the Department of Internal Affairs of Pennsylvania, made conformably to an Act of Assembly approved the 16th day of February, 1833, I have hereunto set my Hand and caused the Seal of said Department to be affixed at Harrisburg, this Fifteenth day of June 1910

Henry Houch
Secretary of Internal Affairs.